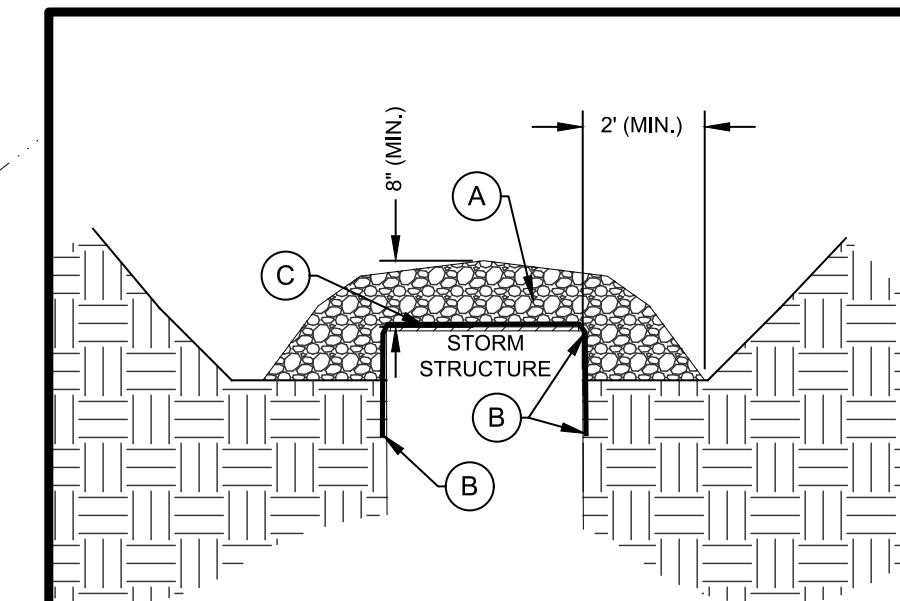
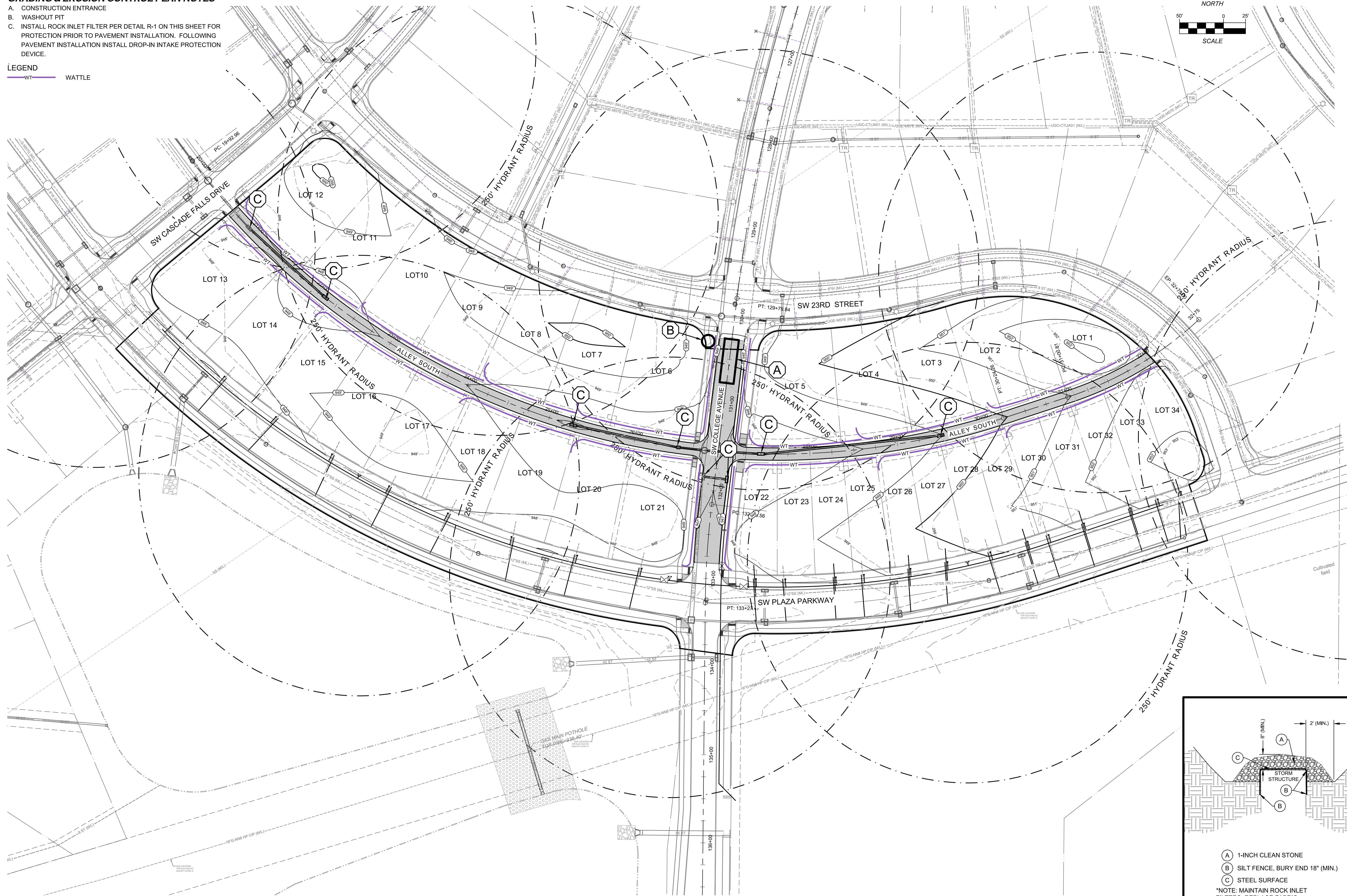
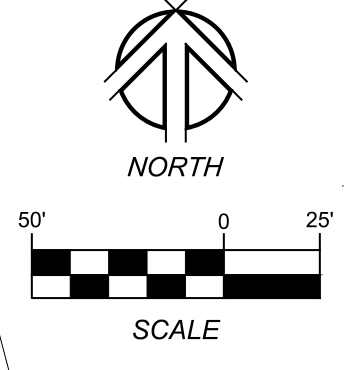


GRADING & EROSION CONTROL PLAN NOTES

- A. CONSTRUCTION ENTRANCE
- B. WASHOUT PIT
- C. INSTALL ROCK INLET FILTER PER DETAIL R-1 ON THIS SHEET FOR PROTECTION PRIOR TO PAVEMENT INSTALLATION. FOLLOWING PAVEMENT INSTALLATION INSTALL DROP-IN INTAKE PROTECTION DEVICE.

LEGEND

WT WATTLE



- (A) 1-INCH CLEAN STONE
 - (B) SILT FENCE, BURY END 18" (MIN.)
 - (C) STEEL SURFACE
- *NOTE: MAINTAIN ROCK INLET FILTERS, REPLACE FABRIC AND/OR ROCK WHEN NEEDED

R-1 ROCK INLET FILTER
NOT TO SCALE

APPROVED FOR CONSTRUCTION BY THE CITY OF ANKENY - 6/22/2018

1250 SW STATE STREET, SUITE A
ANKENY, IOWA 50023-2555
(515) 965-0123 phone • (515) 965-3322 fax
Civil Engineering • Land Surveying
Landscape Architecture

NILLES ASSOCIATES

REVISIONS:
1. 1/16/2018 - REVISIONS PER CITY REVIEW COMMENTS
2. 1/16/2018 - REVISIONS PER CITY REVIEW COMMENTS
3. 1/16/2018 - REVISIONS PER CITY REVIEW COMMENTS
4. 1/16/2018 - REVISIONS PER CITY REVIEW COMMENTS
5. 1/16/2018 - REVISIONS PER CITY REVIEW COMMENTS
6. 1/16/2018 - REVISIONS PER CITY REVIEW COMMENTS
7. 1/16/2018 - REVISIONS PER CITY REVIEW COMMENTS

NOTE: NILLES ASSOCIATES, INC. MAKES NO WARRANTY, EXPRESS OR IMPLIED, AS TO THE ACCURACY OF THE INFORMATION PROVIDED HEREON. THE ENGINEERING INTENT OF THIS PLAN IS TO OBTAIN AND FOLLOW THE ENGINEERING PROFESSIONAL SOCIETY'S STANDARDS AND PRACTICES. ANY DISCREPANCIES, INCONSISTENCIES, AMBIGUITIES, OR CONFLICTS WHICH ARE ALLEGED, SHALL BE THE RESPONSIBILITY OF THE CLIENT.

PROJECT NAME: **ESTATES AT PRAIRIE TRAIL PLAT 7**
ANGKENY, IOWA
DESCRIPTION: **GRADING & EROSION CONTROL PLAN**

PROJECT NO.: **18038**
DATE: 03/21/2018
DRAWN BY: ADS
CHECKED BY: JPN
SCALE: AS NOTED
SHEET TITLE: **R.01**
SHEET NO.: **8/8**