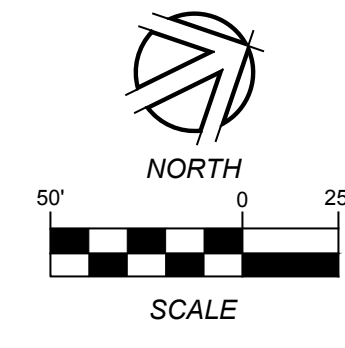


KEY	LOT TYPES	WIDTH	NUMBER	MINIMUM FRONT SETBACK	FRONT FACADE ZONE	MINIMUM SIDE SETBACK	MINIMUM STREET SIDE SETBACK	STREET SIDE FACADE ZONE	MINIMUM REAR SETBACK
	VILLAGE LOTS	60' - 79'	31	15'	10'	5'	10'	10'	7'
	ESTATE LOTS	80' - 109'	13	25'	15'	5'	10'	15'	15'
	TOWNHOME LOTS	22' - 30'	14	0'	10'	5'	5'	5'	7'

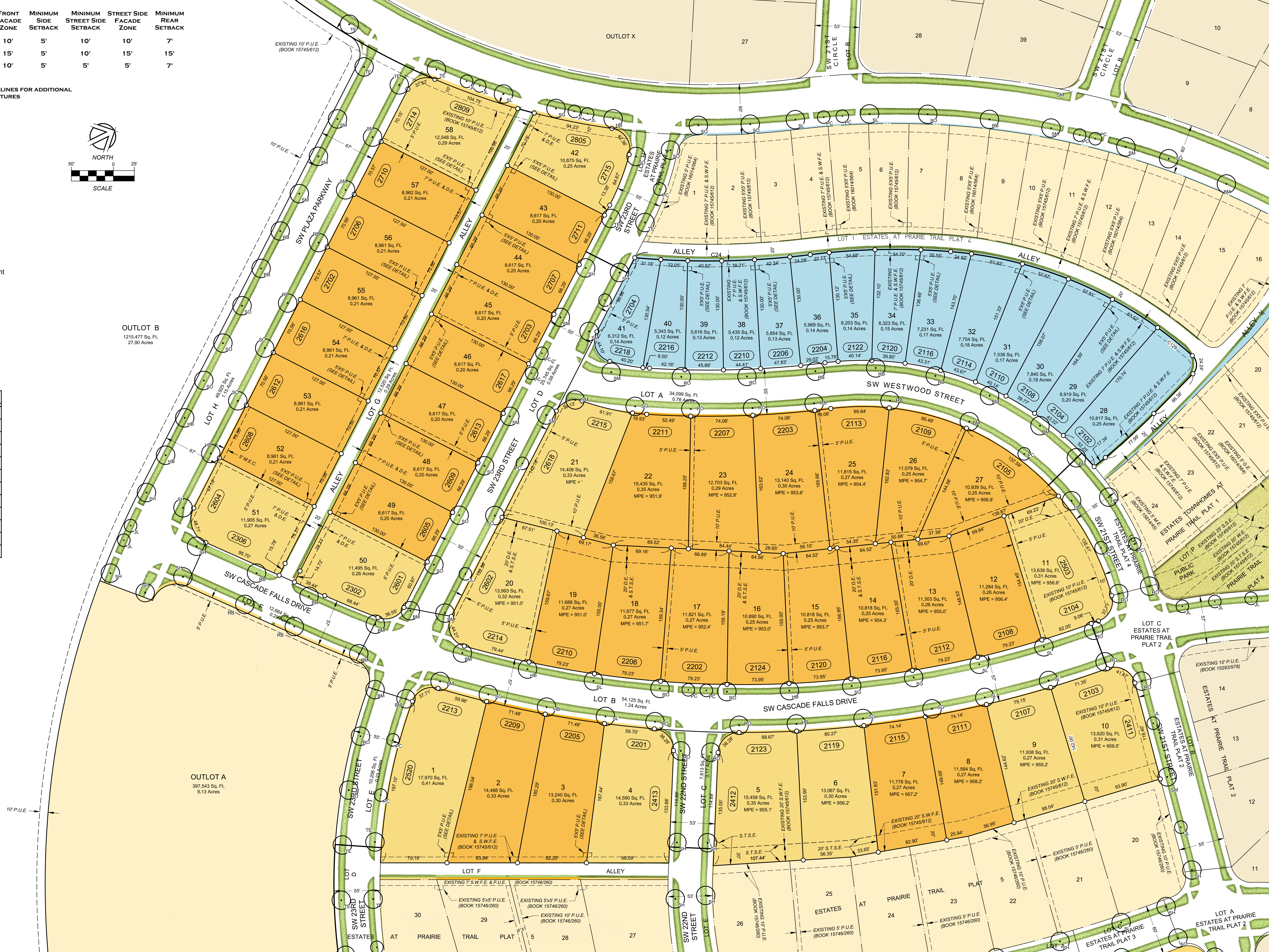
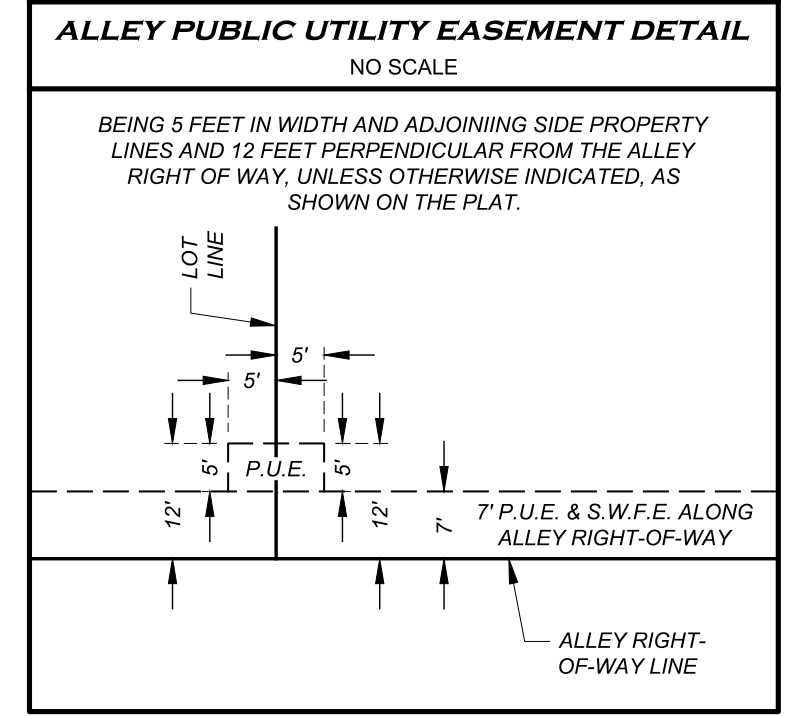
NOTES:
 1. REFER TO THE PRAIRIE TRAIL PATTERN BOOK AND P.U.D. GUIDELINES FOR ADDITIONAL SETBACK RESTRICTIONS FOR BUILDINGS AND ACCESSORY STRUCTURES

- LEGEND**
- Set monument 5/8" IR with red cap #18530 unless otherwise noted
 - P.O.B. Point of Beginning
 - IR Round iron rebar (outside diameter)
 - IP Round iron pipe (outside diameter)
 - MPE Minimum Protection Elevation
 - (R) Record dimension
 - E.E. Electric easement
 - M.E. MidAmerican Energy Underground Electric easement
 - D.E. Drainage easement
 - P.U.E. Public utility easement
 - S.T.S.E. Storm sewer easement
 - S.W.F.E. Surface water flowage easement
 - M.E.C. MidAmerican Energy electric easement
 - (123) Address
 - Subject boundary line
 - Proposed boundary line
 - Proposed easement line
 - Existing boundary line
 - Existing easement line



TREE & SHRUB PLANTING SCHEDULE
 (PER PRAIRIE TRAIL SOUTHWEST NEIGHBORHOOD PLAN)

Key	Common / Scientific name	Minimum Size	No.	Root Comment
BM	Autumn Blaze Maple <i>Acer Freemanii 'Jefferson'</i>	2" cal.	24	B & B or SPADE
SM	Fall Fiesta Sugar Maple <i>Acer saccharum 'Statice'</i>	2" cal.	29	B & B or SPADE
RB	Heritage River Birch <i>Betula nigra</i>	2" cal.	28	B & B or CONT. Single Trunk only
HB	Hackberry <i>Celtis occidentalis</i>	2" cal.	16	B & B or CONT.
SH	Skyline Honeylocust <i>Gleditsia tricanthos var. inermis 'Skycoke'</i>	2" cal.	27	B & B or SPADE
SG	Cherokee Sweetgum <i>Liquidambar styraciflua 'Ward'</i>	2" cal.	16	B & B or SPADE
SO	Swamp White Oak <i>Quercus bicolor</i>	2" cal.	30	B & B or SPADE
RO	Northern Red Oak <i>Quercus rubra</i>	2" cal.	34	B & B or SPADE
SL	American Sentry Linden <i>Liriodendron tulipifera 'MackHenry'</i>	2" cal.	23	B & B or SPADE
TE	Triumph Elm <i>Ulmus 'Morton Glossy'</i>	2" cal.	24	B & B or CONT.
PC	Profusion Crabapple <i>Malus 'Profusion'</i>	1 1/2" cal.	24	B & B or CONT.
JL	Japanese Tree Lilac <i>Sorbus reticulata</i>	1 1/2" cal.	25	B & B or CONT. Single Stem



ESTATES AT PRAIRIE TRAIL PLAT 6