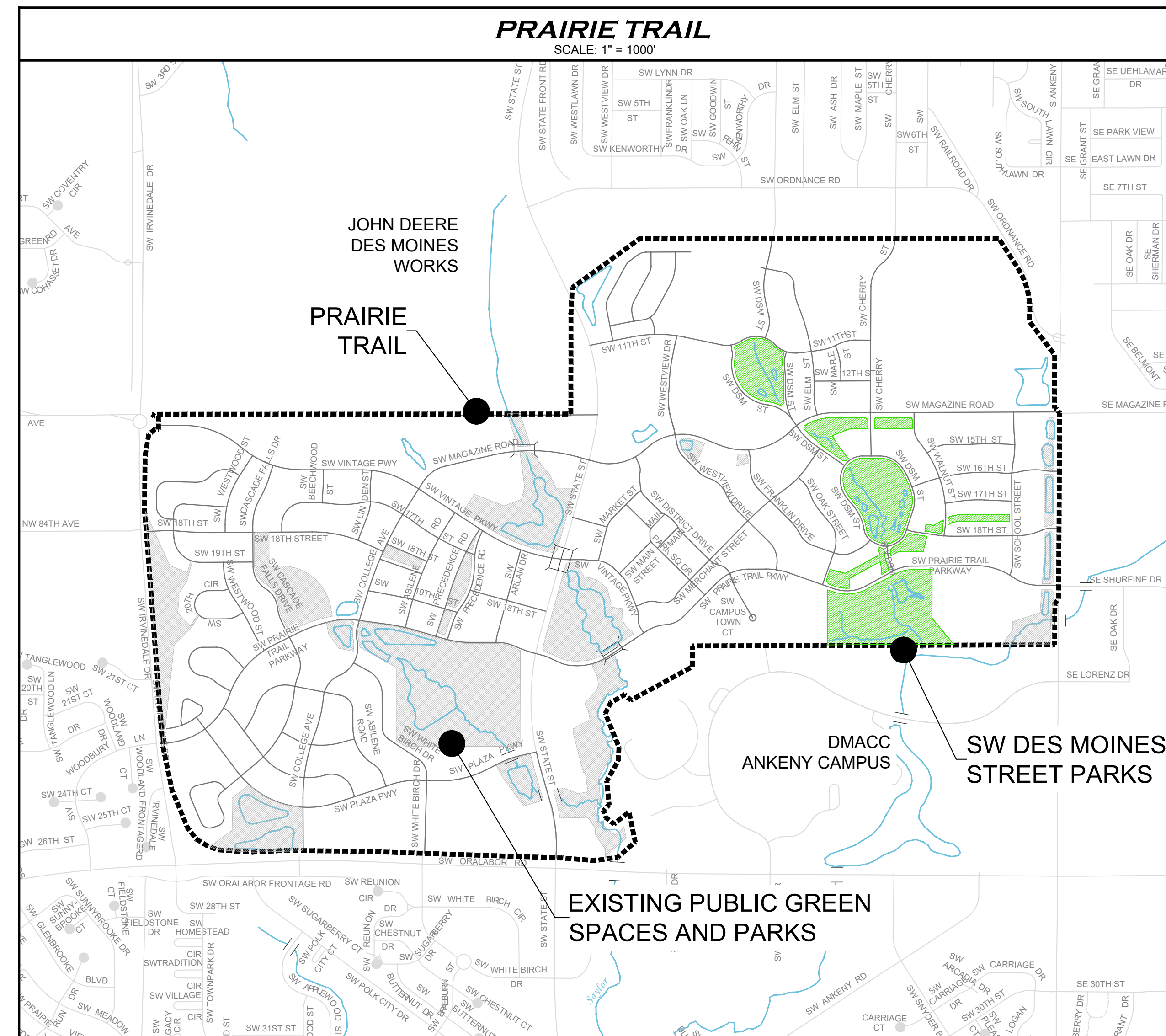
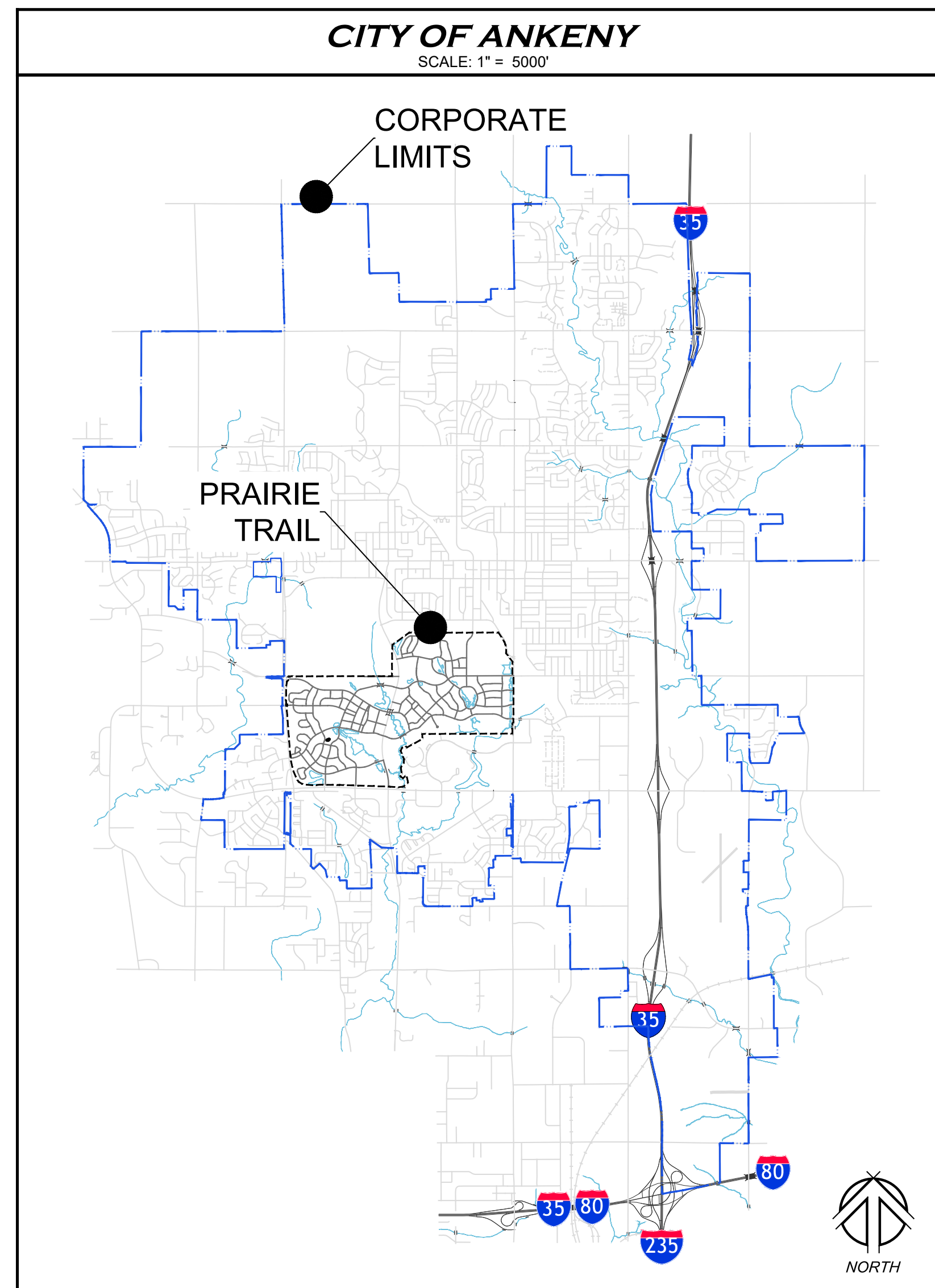


SW DES MOINES STREET PARKS MASTER PLAN

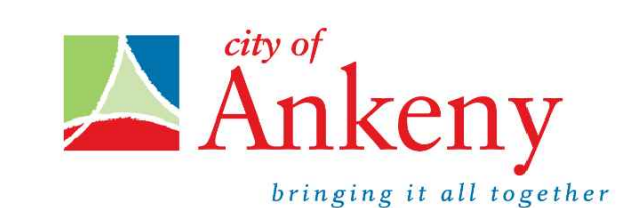


SHEET NO.	SHEET TITLE	DESCRIPTION
1	MP-1	COVER SHEET
2	MP-2	EXISTING CONDITIONS (WEST)
3	MP-3	EXISTING CONDITIONS (EAST)
4	MP-4	SITE INVENTORY
5	MP-5	SUITABILITY
6	MP-6	PROPOSED PARKS PLAN
7	MP-7	MIDDLE PARK
8	MP-8	MIDDLE PARK PLAYGROUND DETAIL
9	MP-9	NORTH PARK
11	MP-10	GREEN FRONTAGE
11	MP-11	TRAIL PARK
12	MP-12	SOUTH PARK
13	MP-13	PHASING PLAN

MASTER PLAN INTENT:

- Vision to guide long-term park development and improvements including: maintained natural areas, active park spaces, and paved shared use paths within the SW Des Moines Street area of Prairie Trail.
- Guide stewardship of water quality and detention basins integrated into maintained natural areas.
- Help ensure long-term financial and ecological stability.

prepared for:



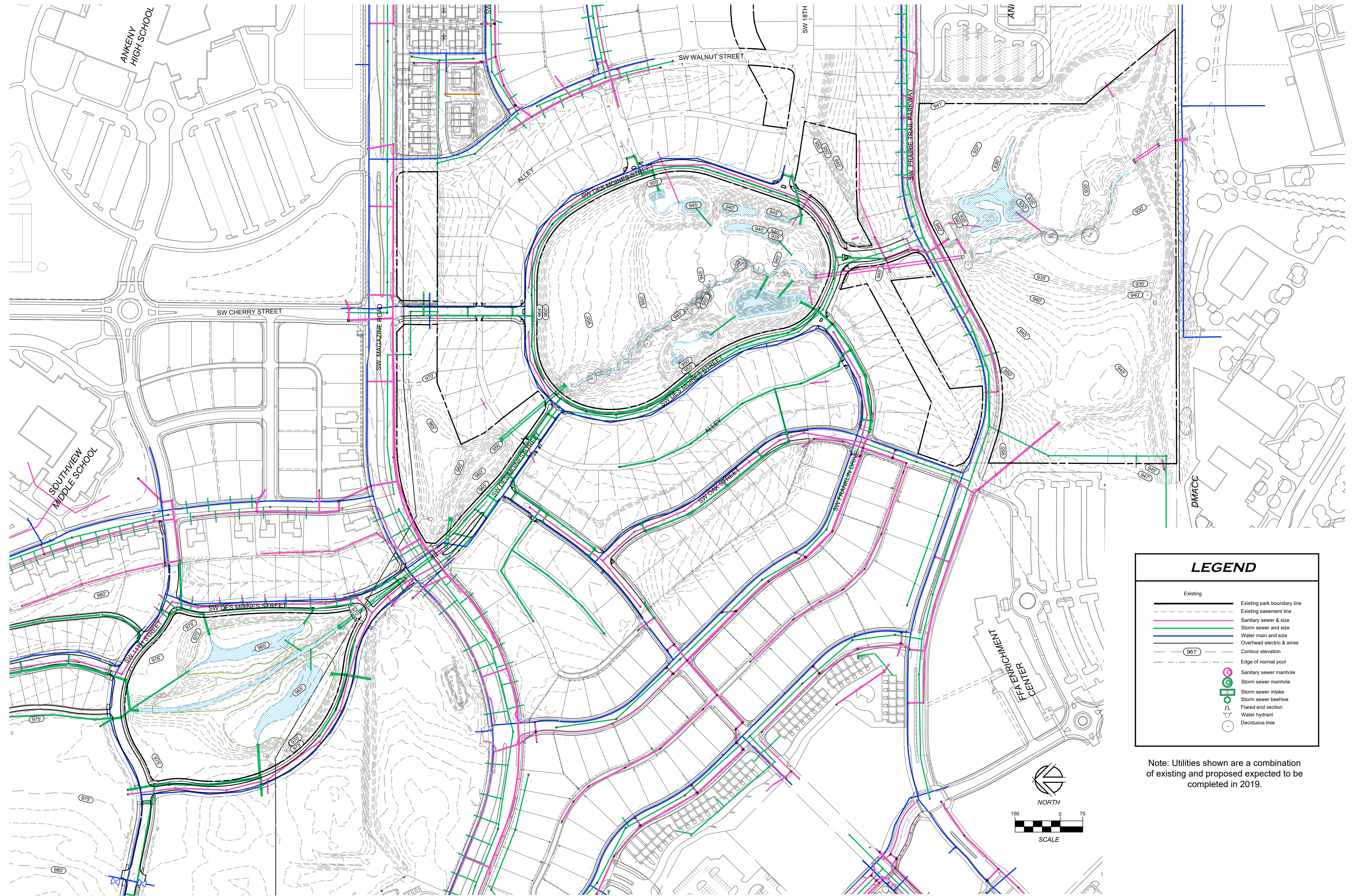
August 16, 2019

	I HEREBY CERTIFY THAT THE PORTION OF THIS TECHNICAL SUBMISSION DESCRIBED BELOW WAS PREPARED BY ME OR UNDER MY DIRECT SUPERVISION AND RESPONSIBLE CHARGE. I AM A DULY LICENSED PROFESSIONAL LANDSCAPE ARCHITECT UNDER THE LAWS OF THE STATE OF IOWA.
	ROGER J. SILVER SIGNATURE _____ DATE _____ PAGES OR SHEETS COVERED BY THIS SEAL: SHEETS MP-1 TO MP-13

LICENSE EXPIRES: 6-30-2021

SW DES MOINES STREET PARKS MASTER PLAN: PRAIRIE TRAIL, ANKENY, IOWA

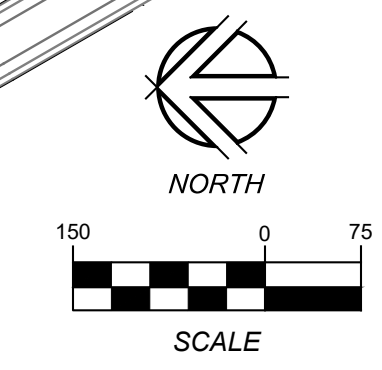
EXISTING CONDITIONS (WEST)



LEGEND

Existing	Existing park boundary line
Existing easement line	Existing easement line
Sanitary sewer & size	Sanitary sewer & size
Storm sewer & size	Storm sewer & size
Water main and size	Water main and size
Overhead electric & wires	Overhead electric & wires
Contour elevation	Contour elevation
961'	961'
Edge of normal pool	Edge of normal pool
Sanitary sewer manhole	Sanitary sewer manhole
Storm sewer manhole	Storm sewer manhole
Storm sewer intake	Storm sewer intake
Storm sewer beehive	Storm sewer beehive
Flared end section	Flared end section
Water hydrant	Water hydrant
Deciduous tree	Deciduous tree

Note: Utilities shown are a combination of existing and proposed expected to be completed in 2019.

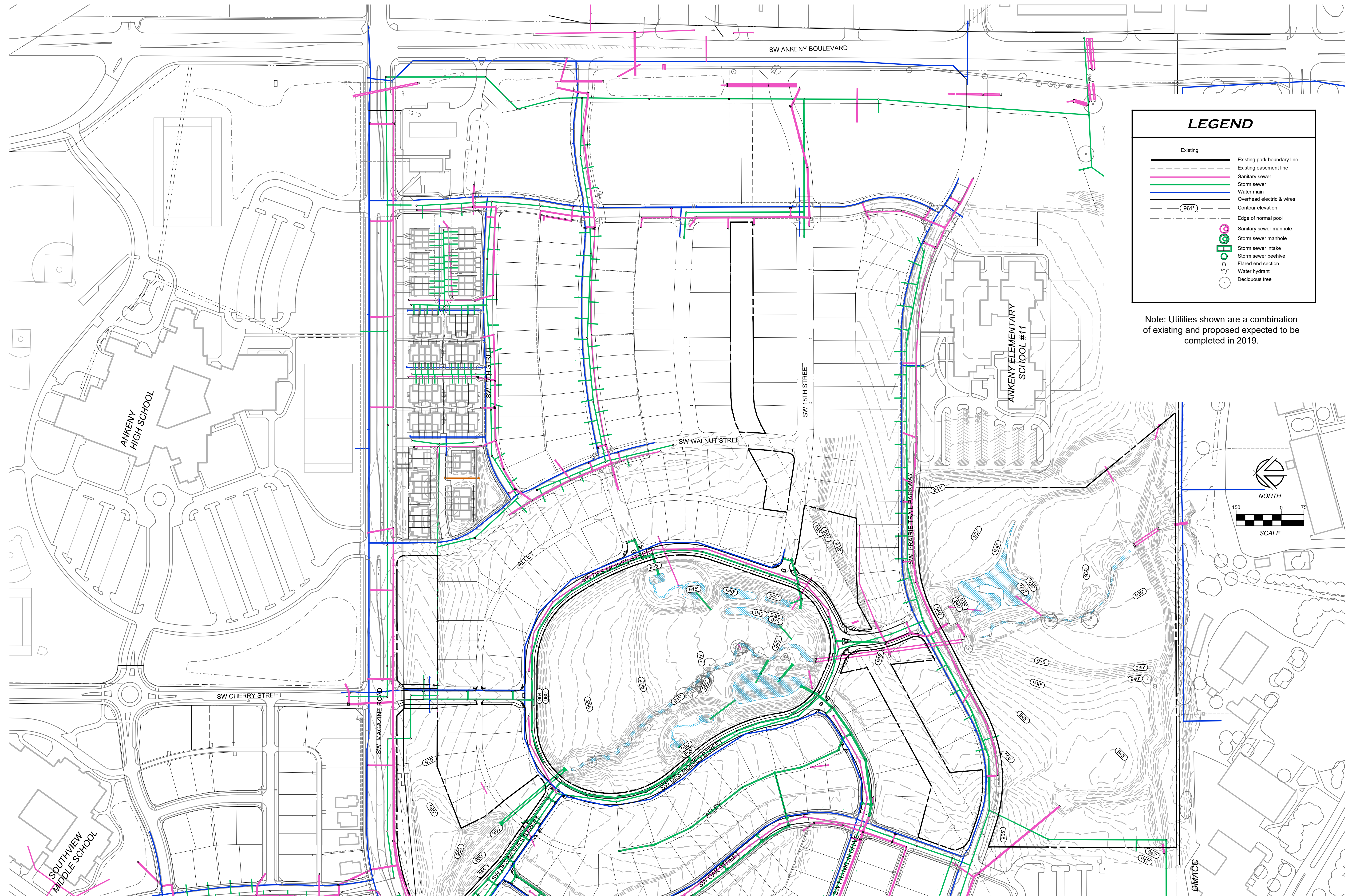


SW DES MOINES STREET PARKS MASTER PLAN: PRAIRIE TRAIL, ANKENY, IOWA

NILLES ASSOCIATES NAI NO# 19010

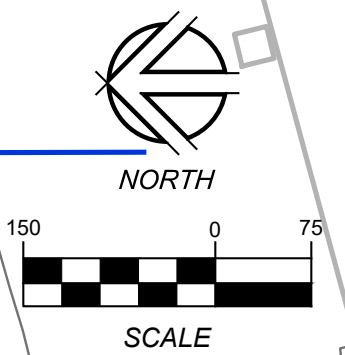
DRAWN BY: TMB	SHEET TITLE: MP-2
CHECKED BY: RJS	SHEET NO: 2 / 13

EXISTING CONDITIONS (EAST)



LEGEND	
Existing	
Existing park boundary line	—
Existing easement line	- - -
Sanitary sewer	— (pink)
Storm sewer	— (green)
Water main	— (blue)
Overhead electric & wires	— (black)
Contour elevation	961'
Edge of normal pool	— (dashed)
Sanitary sewer manhole	⊙ (pink)
Storm sewer manhole	⊙ (green)
Storm sewer intake	⊙ (blue)
Storm sewer beehive	⊙ (yellow)
Flared end section	⊙ (orange)
Water hydrant	⊙ (red)
Deciduous tree	⊙ (white)

Note: Utilities shown are a combination of existing and proposed expected to be completed in 2019.

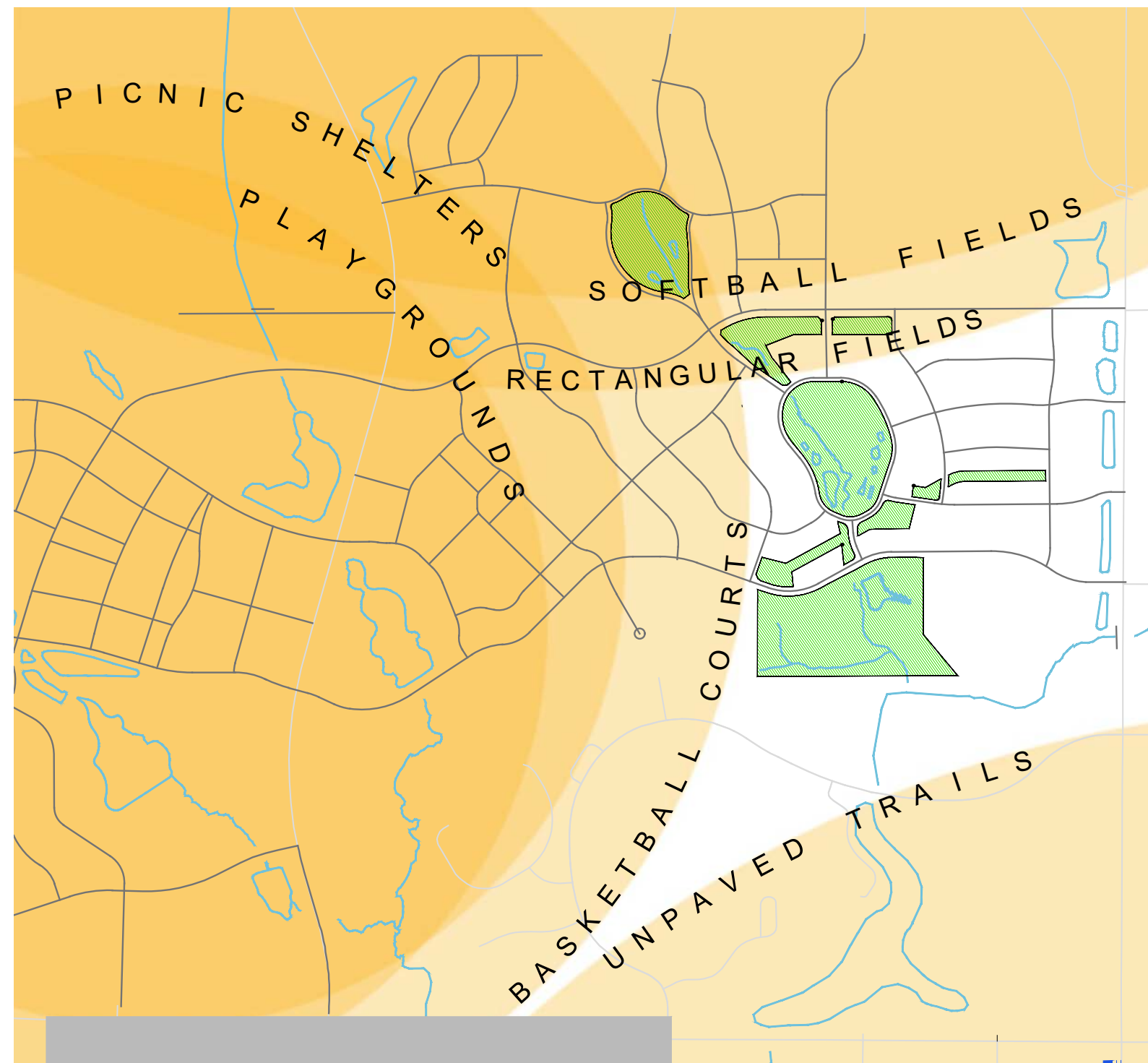


SW DES MOINES STREET PARKS MASTER PLAN: PRAIRIE TRAIL, ANKENY, IOWA


NAI NO# 19010

DRAWN BY:	TMB	SHEET TITLE:	MP-3
CHECKED BY:	RJS	SHEET NO.:	3 / 13

AREA PARK AMENITIES DIAGRAM



SUMMARY:
Each circle represents the population equitably served by the park amenity as labelled. Equity is based on population density and size/number of each amenity in a particular location. The areas in white indicate a "gap" in service.

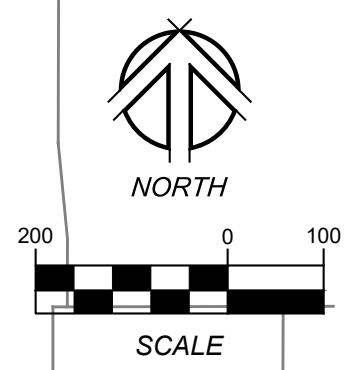
Source: 2019 Ankeny Parks & Facilities Comprehensive Plan

SITE INVENTORY



LEGEND

- Greater than 5% slope
- 100-year, designed flood zone
- Park boundary
- Existing 8' wide, paved shared use path
- Overhead electric & wires
- Northern Natural Gas easement



SW DES MOINES STREET PARKS MASTER PLAN: PRAIRIE TRAIL, ANKENY, IOWA







NILLES ASSOCIATES NAI NO# 19010

DRAWN BY: TMB	SHEET TITLE: MP-4
CHECKED BY: RJS	SHEET NO.: 4 / 13

V:\NAI 2017\Projects 2017\19010\dwg\19010-MP-Sheets 1-5.dwg


SUITABILITY

LEGEND

-  Greater than 5% slope
-  100-year, designed flood zone
-  Suitable for Active Park Space / Improvements
-  Park boundary
-  Existing 8'+ wide, paved shared use path
-  Proposed 8' wide, paved shared use path



SW DES MOINES STREET PARKS MASTER PLAN: PRAIRIE TRAIL, ANKENY, IOWA


NAI NO# 19010

DRAWN BY:	TMB	SHEET TITLE:	MP-5
CHECKED BY:	RJS	SHEET NO.:	5 / 13

V:\NAI 2017\Projects 2017\19010\dwg\19010-MP-Sheets 1-5.dwg




PROPOSED PARKS PLAN

PARK SUBAREAS (ACRES)			
	MAINTAINED ACTIVE SPACE	MAINTAINED NATURAL AREAS	TOTAL LOT SIZE
NORTH PARK	2.1	5.6	7.7
MIDDLE PARK	4.1	8.5	12.6
GREEN FRONTAGE	1.9	3	4.9
TRAIL PARK	2.7	2.4	5.1
SOUTH PARK	8.5	12.1	20.6
PARKS OVERALL:	20.8	30.1	50.9

DESIRED PARK ELEMENTS

1. Picnic Shelter
2. Playground
3. Softball / Practice Fields
4. Rectangular Fields
5. Basketball Courts
6. Unpaved Trails
7. Convenient Bicycle Entrances to Parks
8. Passive Open Space Lawn
9. Utilize Easements as Amenities
10. Off-street Parking

LEGEND

	Maintained Active Space
	Maintained Natural Areas
	Park boundary



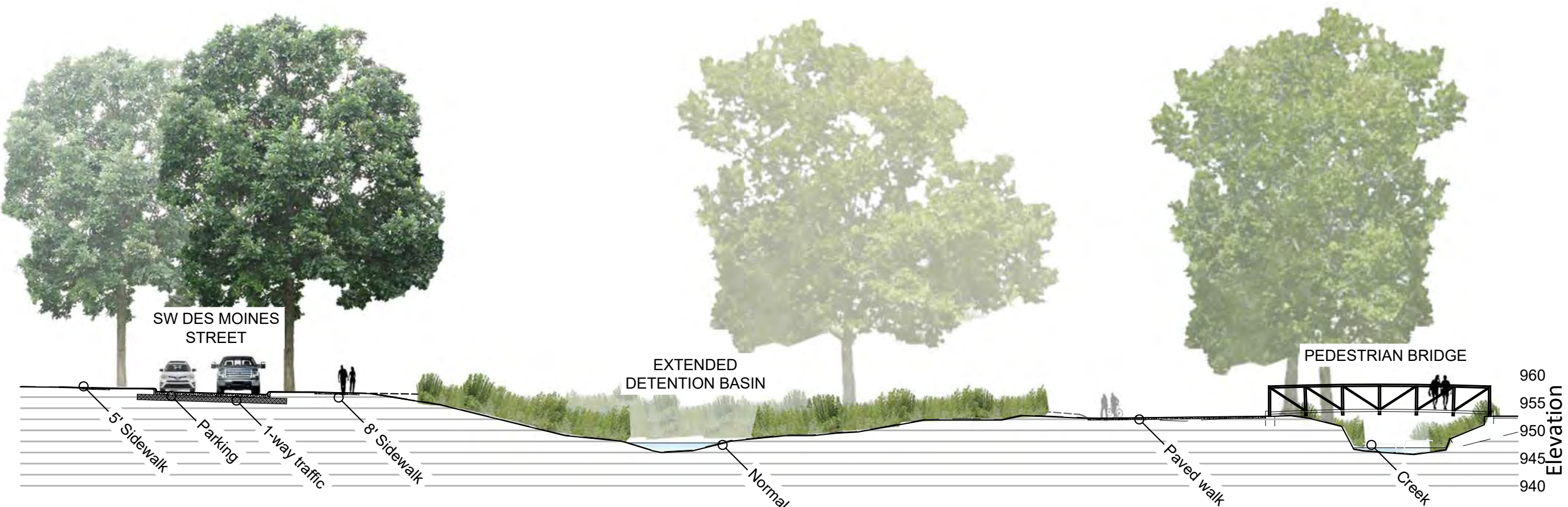
SW DES MOINES STREET PARKS MASTER PLAN: PRAIRIE TRAIL, ANKENY, IOWA

MIDDLE PARK



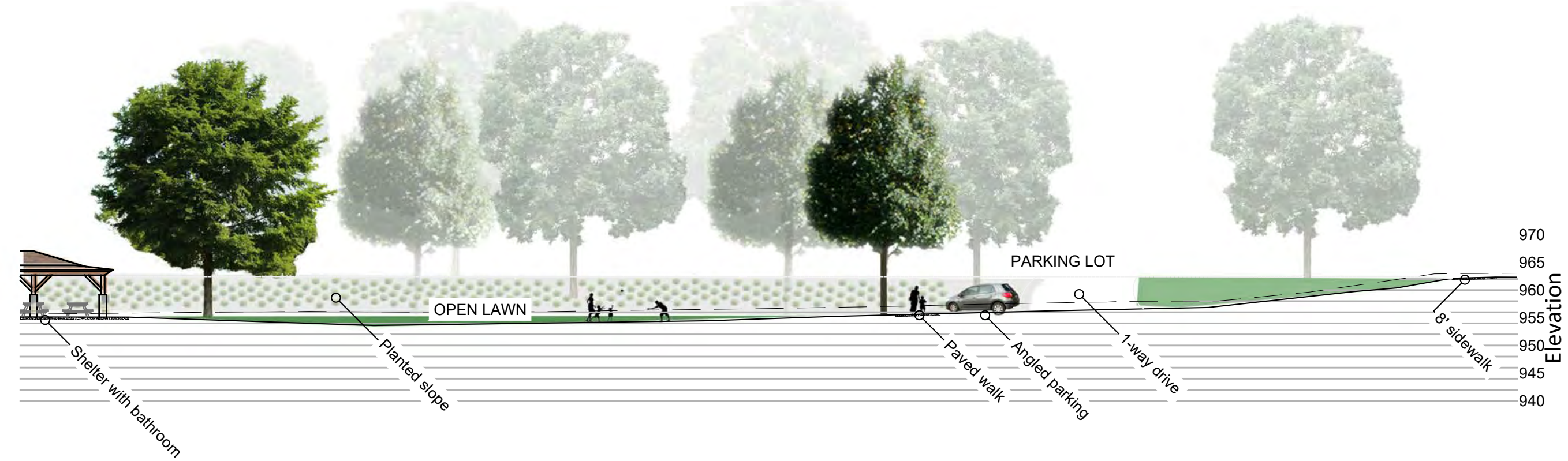
S-1 PLAYGROUND AND SHELTER SECTION-ELEVATION

SCALE: 1" = 20'-0"



S-2 BASIN AND CREEK CROSSING SECTION-ELEVATION

SCALE: 1" = 20'-0"



S-3 OPEN LAWN AND PARKING SECTION-ELEVATION

SCALE: 1" = 20'-0"



What is the Maintained Natural Area?

The natural area in this park functions as a sponge during storm events. A series of shallow water quality treatment areas work together to slow the first 1.25" of water discharged from street storm sewers. They improve water quality downstream while providing habitat for birds, pollinators, and other beneficial prairie life. In larger storm events water spreads throughout the interior prairie basin. This area provides the volume to fill up temporarily and reduce downstream flooding. The water drains down toward the creek or is transpired into the air by prairie plants.

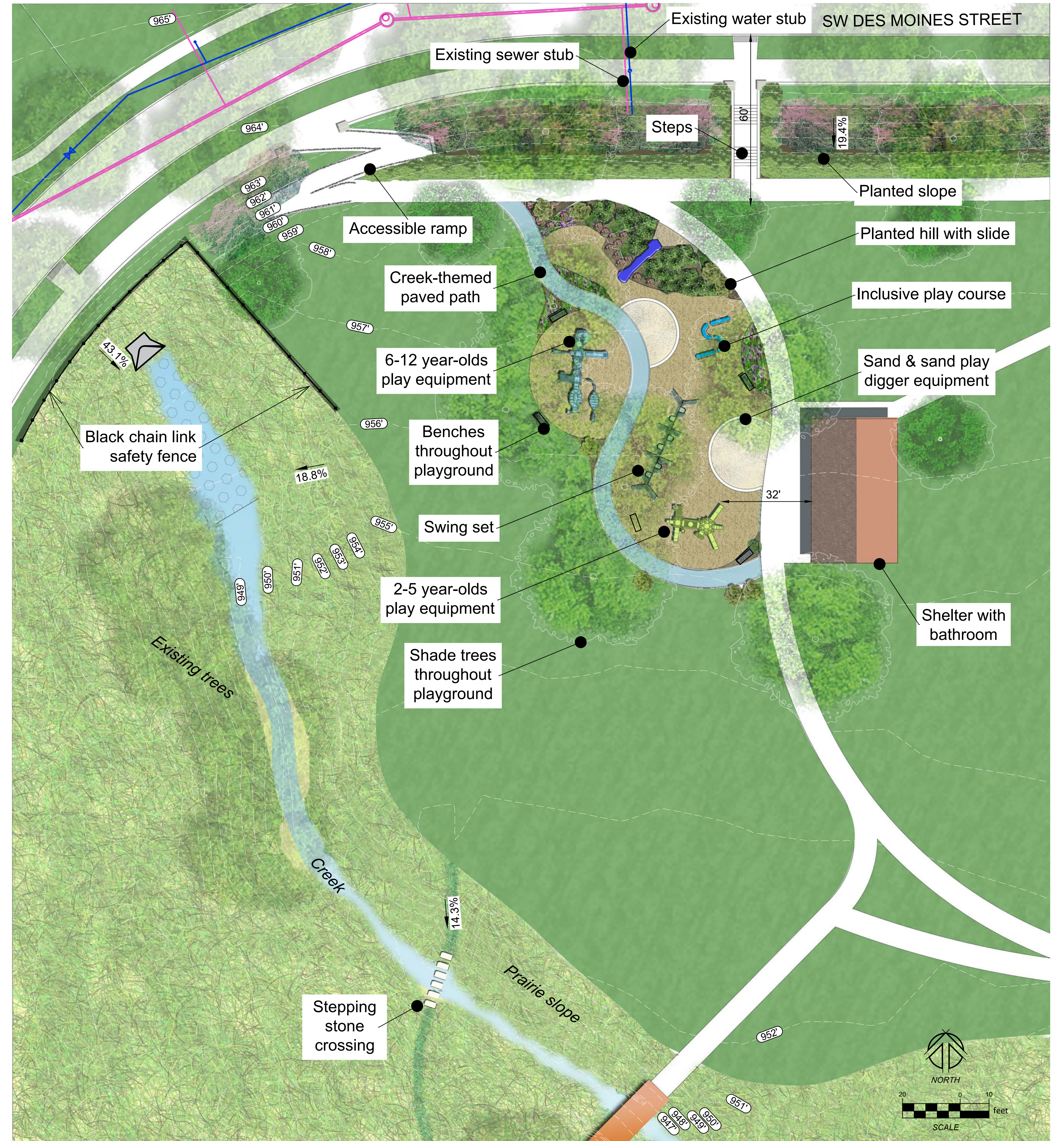
SW DES MOINES STREET PARKS MASTER PLAN: PRAIRIE TRAIL, ANKENY, IOWA

V:\NAI 2017\Projects 2017\19010\dwg\19010-MP-Sheets 6-13.dwg

INSPIRATION IMAGES

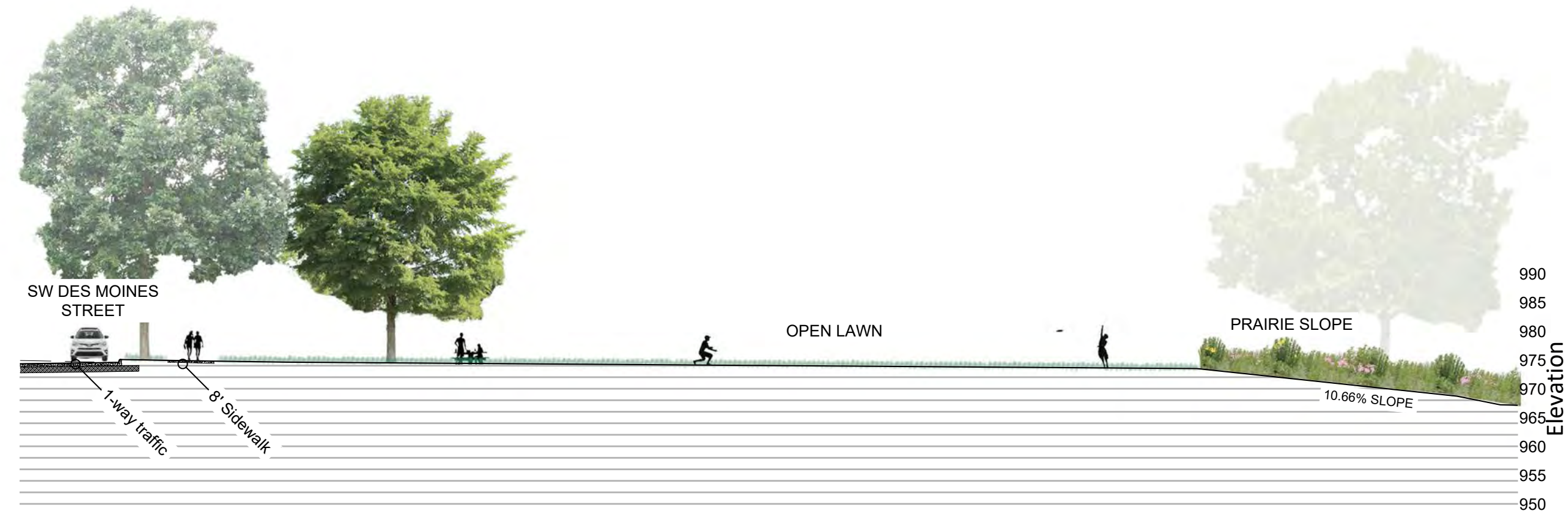


MIDDLE PARK PLAYGROUND DETAIL

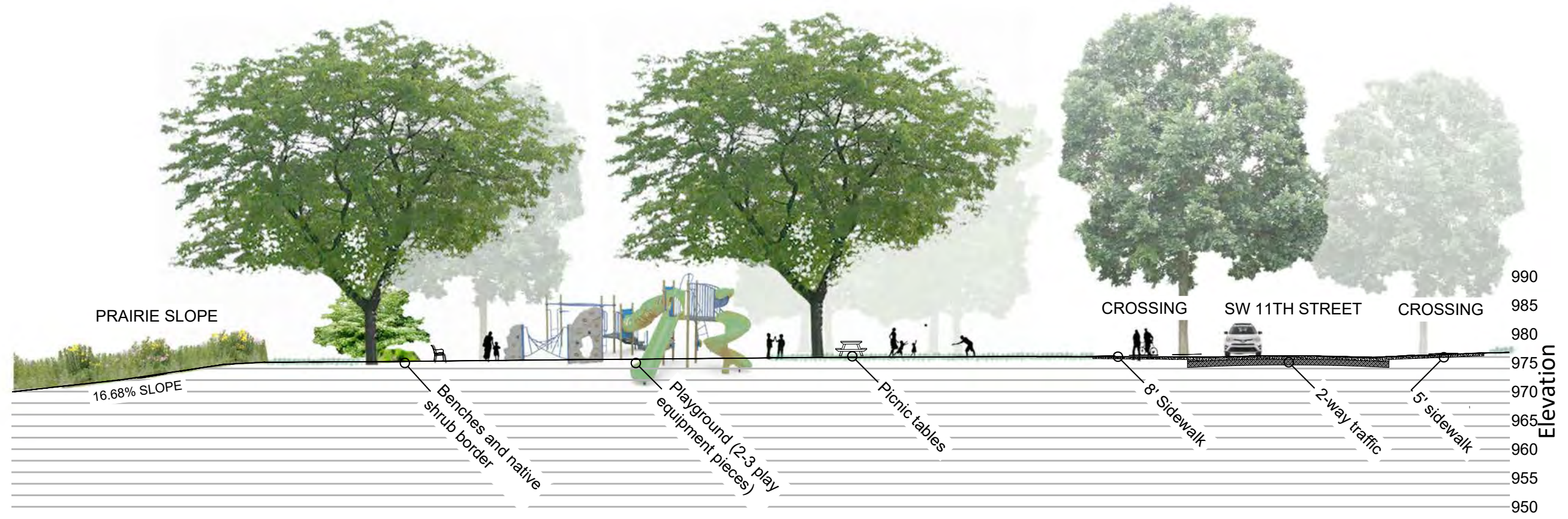


SW DES MOINES STREET PARKS MASTER PLAN: PRAIRIE TRAIL, ANKENY, IOWA

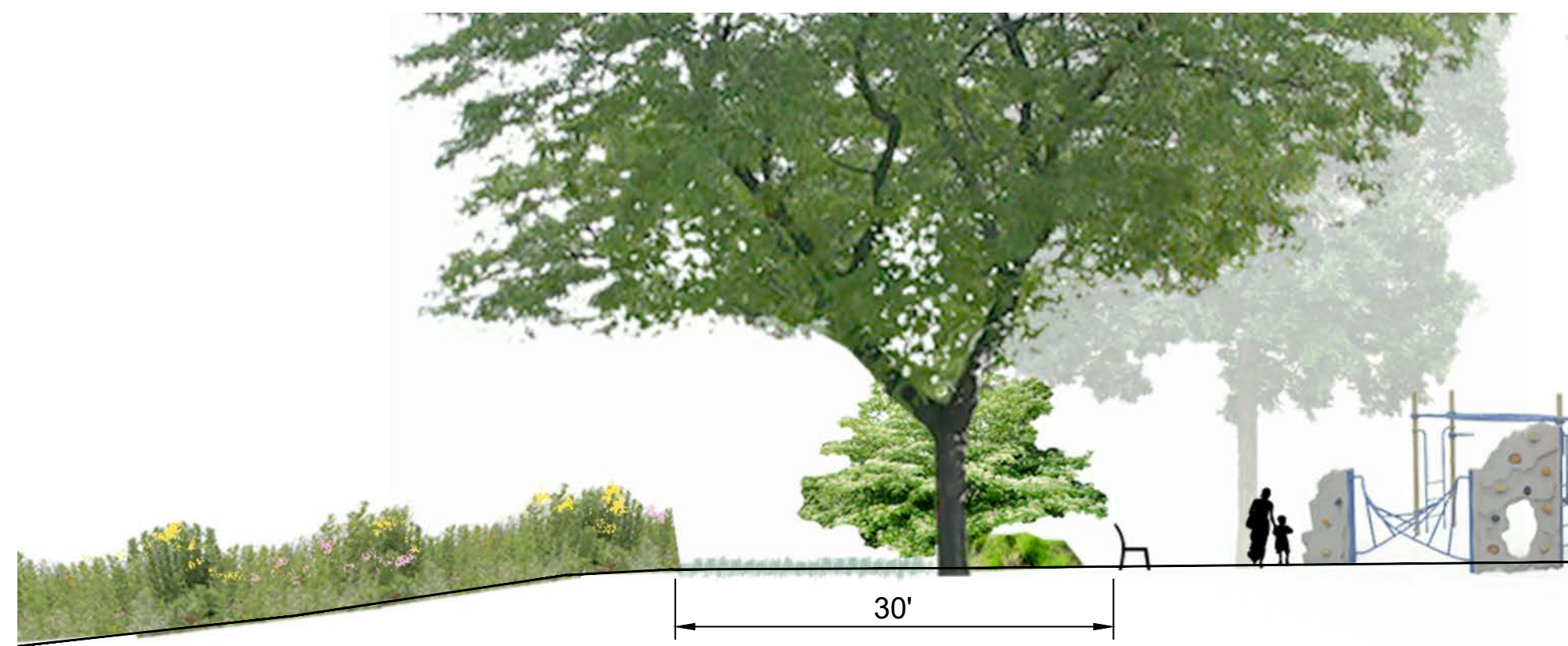
V:\NAI 2017\Projects 2017\19010\dwg\19010-MP-Sheets 6-13.dwg



S-1 OPEN LAWN SECTION-ELEVATION
SCALE: 1" = 20'-0"



S-2 PLAYGROUND SECTION-ELEVATION
SCALE: 1" = 20'-0"



TRANSITION FROM PLAYGROUND TO PRAIRIE



Playground with trees (2-3 play equipment pieces); picnic benches

Shrub border and seating with view to playground and natural area

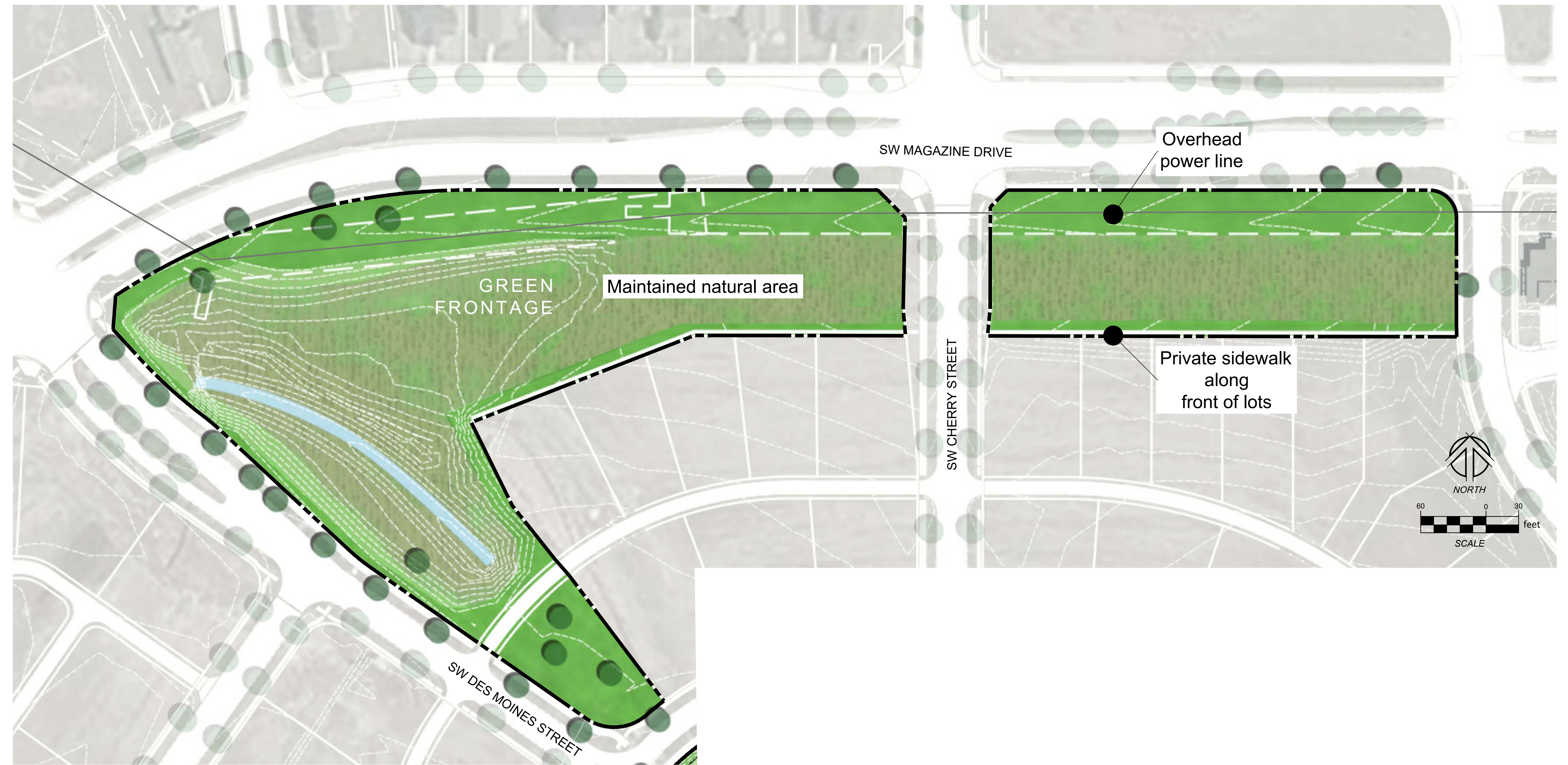
What is the Maintained Natural Area?

Basins shown in this park plan are temporary sedimentation basins. They will be re-graded and final seeding established upon construction of water quality basins.

SW DES MOINES STREET PARKS MASTER PLAN: PRAIRIE TRAIL, ANKENY, IOWA

V:\NAI 2017\Projects 2017\19010\dwg\19010-MP-Sheets 6-13.dwg

GREEN FRONTAGE



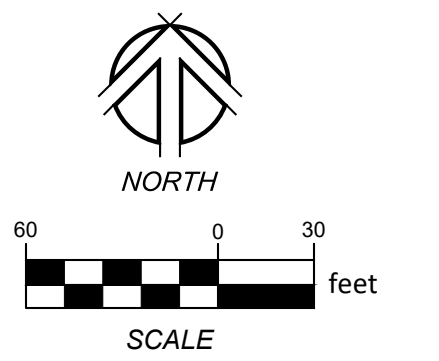
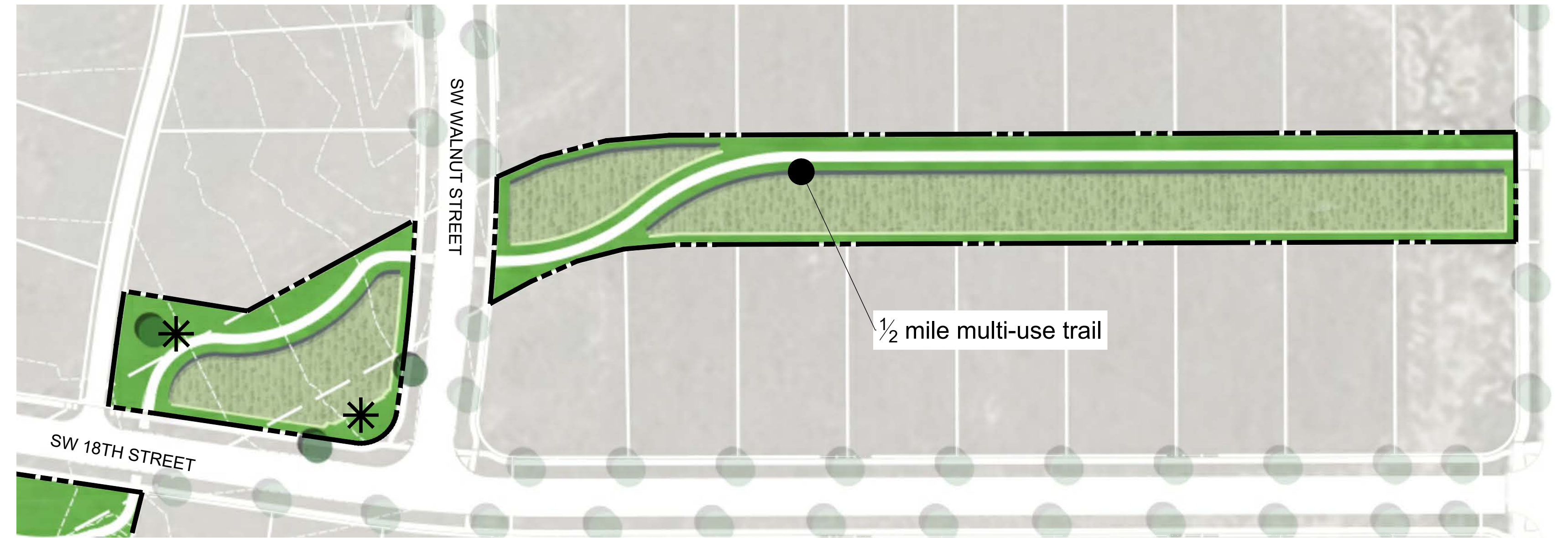
SW DES MOINES STREET PARKS MASTER PLAN: PRAIRIE TRAIL, ANKENY, IOWA



NAI NO# 19010

DRAWN BY:	TMB	SHEET TITLE:	MP-10
CHECKED BY:	RJS	SHEET NO.:	10/13

TRAIL PARK



SW DES MOINES STREET PARKS MASTER PLAN: PRAIRIE TRAIL, ANKENY, IOWA



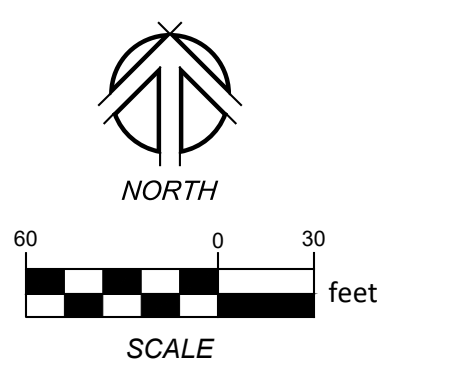
NAI NO# 19010

DRAWN BY:	TMB	SHEET TITLE:	MP-11
CHECKED BY:	RJS	SHEET NO.:	11/13

SOUTH PARK



SW DES MOINES STREET PARKS MASTER PLAN: PRAIRIE TRAIL, ANKENY, IOWA



V:\NAI 2017\Projects 2017\19010\dwg\19010-MP-Sheets 6-13.dwg

PHASING PLAN

Phase 1

- Middle Park: Natural area plantings (with 2 years establishment maintenance), shelter, paved circulation, parking lot, street trees.
- Green Frontage: Natural area planting & establishment, street trees.



Phase 2

- Middle Park: Ramp, stairs, playground, bridge.
- North Park: Natural area plantings (with 2 years establishment maintenance), street trees, playground area.
- South Park: Street Trees.



Phase 3

- South Park: Ball fields, paved circulation, parking lot, basketball court(s), landscaping, fencing.
- Trail Park: Natural area plantings (with 2 years establishment maintenance), benches, tree planting.



SW DES MOINES STREET PARKS MASTER PLAN: PRAIRIE TRAIL, ANKENY, IOWA

